

BaZi: THE FOUR PILLARS OF DESTINY
February 23, 2011

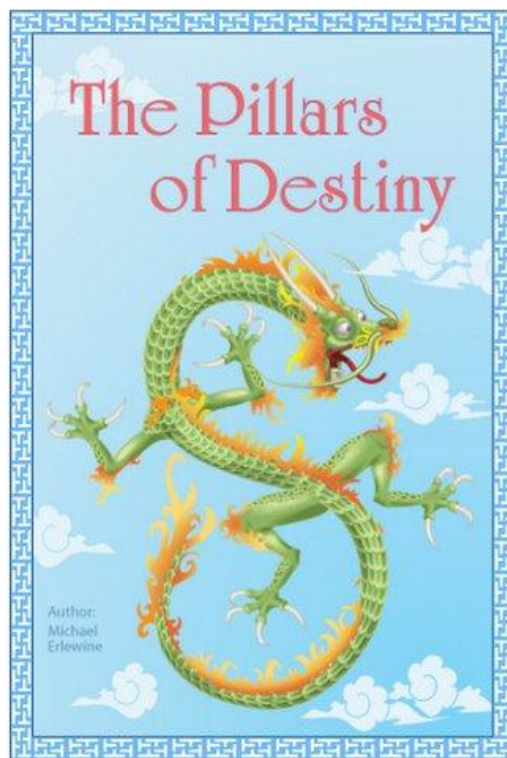
By Michael Erlewine (Michael@Erlewine.net)

Chinese Astrology

I have studied Chinese astrology along with Tibetan astrology for many years. It is very profound and I mean to write a book about it. In the meantime, I did write a computer report on the Four Pillars of Destiny, a method used by authentic Chinese astrologers. I like it a lot. See what your thoughts are. I will try to get it available soon.

I wrote the text, designed all the cards, and the report itself.

You can download in high-res to read more clearly, if you wish.



Report for
Martin Machnowski
Sep 02, 1953

Welcome to the Pillars of Destiny

There are a number of kinds of astrology and each provides us a unique view of who we are, a second opinion compared with what we have been brought up to believe - what society has provided.

Chinese "Pillars of Destiny" astrology is many centuries old and still practiced by the ethnic Chinese. It brings to us a complete and authentic way of seeing ourselves from a new perspective. We hope you enjoy your Pillars of Destiny report.

Table of Contents

- Section 1: History and Background
- Section 2: Your Pillars of Destiny
- Section 3: Your Day Master
- Section 4: Independent or Dependent
- Section 5: Season Factor
- Section 6: The Expression Star
- Section 7: The Wealth Star
- Section 8: The Friends Star
- Section 9: The Resources Star
- Section 10: The Influences Star
- Section 11: Yin/Yang Polarity
- Section 12: Peach Blossom
- Section 13: Relationships
- Section 14: Marriage
- Section 15: Ten-Year Luck Cycle
- Section 16: The Current Forecast

Section 1

History and Background

Chinese astrology/astronomy was practiced at least as early as the time of the Yellow Emperor (Huang Di), around 2700 BC to 2150 BC, during which time imperial astrologer/astronomers advised the emperor by observing and charting the movements of the heavens. Throughout history, Chinese medicine, astrology, and geomancy (Feng Shui) have been interdependent and practiced as one science called "Wu Shu" (the Five Arts) consisting of feng-shui, medicine, destiny, divination, and physiognomy. The Four Pillars are part of the 'Destiny' or Ming Xue studies.

Four Pillars (also called BaZi) translates as "the eight characters," which amount to four pillars of two characters each. These then are the "Four Pillars of Destiny," which are often just called the "Four Pillars" or "BaZi." BaZi can be traced back to the Period of the Tang Dynasty (618 - 906 A.D.) and most authorities credit Grand Master Xu Zi Ping as its founding father. BaZi or Four Pillars astrology is an authentic astrological tradition still practiced by many ethnic Chinese to this day.

Pillars of Destiny astrology should not be entirely new to those of us who live here in the West. The four pillars of destiny are none other than the year, month, day, and hour of birth of an individual or event, so this concept is not so very different from Western astrology. Astrological ideas, except that the actual methods of BaZi astrology can be quite different from what we use today here in the West.

If we had to sum up what BaZi or Four Pillar astrology is all about in a single word, that word would be "balance." It is pretty much axiomatic in Chinese metaphysical studies that nothing is good, of value, or "works" that is not balanced. Balance is the key to unlocking one's individual destiny as coded in the Four Pillars - the hour, day, month, and year of birth. Four Pillars astrology provides us with a unique viewpoint of our life, an alternate (but complementary) view from what our standard astrology provides.

Section 2

The Pillars of Destiny

In Four Pillars astrology can see, there is one pillar each for the hour, day, month, and year of birth. While the popular newspaper style of Chinese astrology only concerns itself with the animal year of birth, for example the "Year of the Dog," there is much more to the Pillars of Destiny astrology than that. For example, the key to the chart is the Day Pillar, which is called the "Day Master," and is the most important focus for interpretation. The Day Master is similar to our solar birthday here in the West.

Four Pillar analyses involve relating the Day Master to the other three pillars. The Day Master represents what we would call the "Self" (Sun) and is basically either strong or weak, and it comes in various degrees of strength or weakness. A "Strong" Day Master is said to be independent and a "Weak" Day Master is termed interdependent.

In this report we will concentrate on the day pillar or "Day Master," as it is called. In Four Pillars astrology, the Day Master is always the key to the natal chart and, as mentioned, there are two main types of Day Masters, the Independent Day Master and the Inter-dependent Day Master.

Section 3

Yang Fire Day Master

Fire people are charged up, ready to roll, and full of enthusiasm. As one of these types, you are usually able to easily communicate your passion to those around you. Some may find you just too intense or active. You very much prefer speaking to listening and invariably tend to leap before you look. Fire people are always on the go - active.

Society likes you when they need to make a presentation or rouse an audience. Fire people are outgoing, adventurous, sometimes even to the point of being aggressive, but for the most part they are warm and kind. People are drawn to you, perhaps because you make life appear exciting and still filled with possibilities. You naturally love change and being on the move. In Western astrology, you would have the attributes often associated with the planet Mars.

You are Yang or masculine Fire, like the fire in the Sun, shining bright over all and warm. When you come into a room, it suddenly is so much brighter. Everyone perks up. In this respect you are not unlike the zodiac sign Leo in Western astrology.



Section 4

Interdependent Day Master

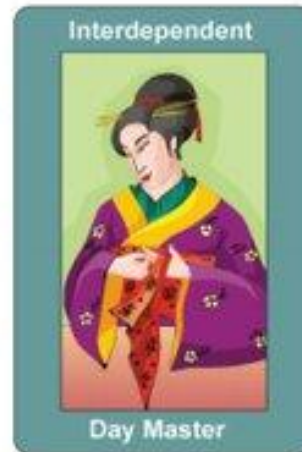
You have what is called an Inter-dependent Day Master, and this suggests that you prefer to work with people from within a secure framework, situation, or group, rather than to work alone.

What this indicates is that you are above all a team player, someone who prefers working with and through an existing situation (group interaction) rather than working alone as an entrepreneurial type. In other words, you work inter-dependently with others as opposed to being somehow above and independent from the group. You are more productive working with a group than trying to create things on your own.

You are also not a home being the boss, telling others what to do. You would rather work with others as a part of a team. At the same time you can at times resent authority and don't like the feeling of being controlled, although this is probably due to a lack of confidence on your part.

In summary, cooperation with others is a necessary quality with you, a quality very important for your own well being. You draw strength, increased confidence, and accurate direction from friends, family, and your surroundings in general. Given a supportive environment, you thrive. You naturally prefer not to function as an independent agent, but do fabulously pick up on anything that is already established and in motion.

You have a somewhat fragile Day Master, which suggests that your life energy or Qi works best in an environment that is protected and secure, perhaps surrounded by friends and with plenty of resources for growth and confidence.

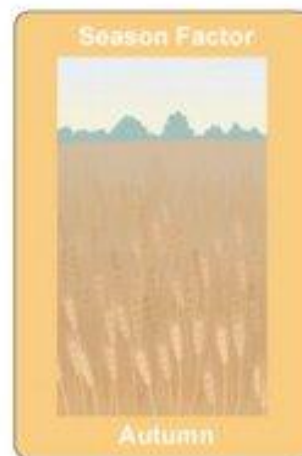


Section 5

Season of Day Master: Autumn

Your Day Master season is Autumn when the element Metal rules. This is probably too technical, but here is what the tradition has to say about each of the five elements in Autumn:

Autumn season celebrates the element Metal and marks is a time when this element is vibrant and at its strongest. Water also is considered strong in Autumn because Metal produces Water and if Metal is strong, then Water automatically is strong. Earth however in Autumn is weak because Earth is the Mother of Metal and in order for Metal to be strong, much Earth has to be used to produce Metal. Fire is not strong in Autumn because Fire controls Metal, but when Metal is very strong, it cannot be controlled. And last, Wood is weak in Autumn because Metal controls Wood, and because Metal is at its strongest in Autumn, it tends to over-control Wood, thus weakening it.



The Five Stars

The "Five Factors" or "Five Stars" as they are commonly called is the very heart of Four Pillar astrology as they define your relationship to the cycle of life. The cycle is endless, but that Five Stars or snapshots of that cycle are 'You and Companions', your Expression, Wealth, Influences on You, and your Resources (support system). We will go through them one by one.

Section 6

The Expression Star

In Chinese astrology, the Output Star has to do with whether you are able to produce or do the things needed for you to be successful and just what kind of things those might be - the products you make, if any. This star is often used as one of the main indicators for the career and has a lot to say about the particular direction in life you take or whether you are waiting for something to fall into your lap.

As you might imagine, creativity and expression of all kinds can be found here, whether that be in the Arts (music, film, writing, speaking, etc.) or a physical product that you created. This star rules expression of all kinds, in particular creative expression.

You may have difficulty expressing yourself, simply getting it out for everyone to see.

You especially love and value creativity and self-expression in all things. This is a lifelong trait and very much a part of your makeup. You love and want to be a creative force and to express and show to others whatever you consider as beautiful and fine.

However, this factor is not as highly visible in your Four Pillars chart as are some of the other factors you have going for you. The net result of all this is that you may be more of a closet creator than you would like, either finding it hard to express your creativity to others and the world around you or (more probably) finding it hard to get the recognition you crave from the world for what you have produced. One result of this inner love of creativity is that you may find yourself working with others who are creative, fulfilling your own sense of creativity by enabling others to use their creativity. This syndrome can be very touchy for you.



Section 7

The Wealth Star

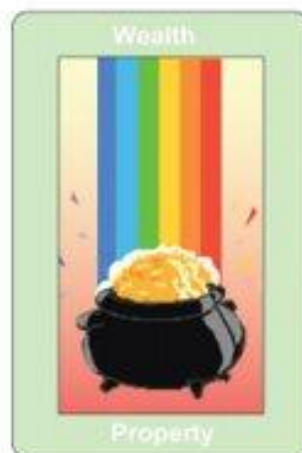
Almost everyone is concerned with what their Wealth Star has to say. The Wealth Star covers not only what wealth we may accumulate but also our ability to create and hold onto wealth and property.

You really care when it comes to money, property, wealth, finances, and all of that. This is something that may concern you, at times perhaps overmuch and this amounts to a caution:

money and possessions will be very important to you regardless of whether there is any real cause for worry.

However, you may have trouble controlling or managing money so be advised. This is not your strong suite.

Another point is that the good things in life are something you value and you are not ashamed to let others know of your good fortune. You like to show off what you have.



Section 8

The Influence Star

The Influence Star, also called the 'Power Star' refers to all that controls or influences you and how you take to that control, whether you like guidance or find it intimidating. In astrological terms, we are talking about authority, and the rules and regulations of the planet Saturn. Your Influence star shows how you relate to authority.

You can tolerate authority, but only in small doses and even then only when you are on the top of your game. Otherwise, you tend to experience these same persons or authorities as overriding and bossy when you are not feeling as secure. At these less-secure times, rules and regulations seem to get in the way and appear as obstacles rather than help.

This kind of love-hate attitude to oversight or direction by outside authorities will probably play a significant role throughout your life, and regulations may not always be easy for you to negotiate or bear. By "outside" authority, we mean anyone in a position to direct or lay down rules or regulations that affect your life and work. These authorities could be as benign as a mentor and teacher on the one hand or a too-demanding boss on the other. You can at times be overly sensitive to this kind of direction and may be liable to resist authority of any kind.

In fact, how you respond to direction very much depends on the state of your own confidence in yourself. When confidence is high, direction is welcomed or at least tolerated, but when confidence is low or you feel somewhat out of control, then direction and regulations from the outside can be experienced as just too controlling and confining. It may be difficult at these times for you not to resent authority.

Since this condition resides in your natal Four Pillars, this is not a passing phase but will be a lifelong condition, something you should be aware of and prepare for.



Section 9

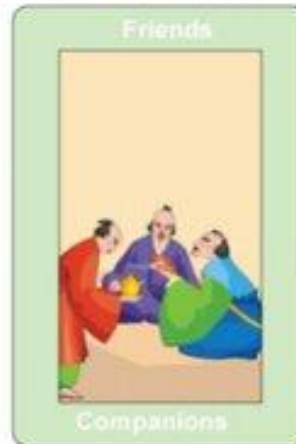
The Friends Star

The Friends Star is pretty much straightforward; it refers to your friends and companions, co-workers, as well as your business partners. Here we learn how social you are and if you prefer the company of others to being on your own.

You need friends and probably really depend on your family and/or friends for encouragement, for keeping up your self-confidence, and for guidance - helping you to make the right choices. It is unlikely that you will even be lonely, for you will probably be surrounded by friends and acquaintances.

Your own self-esteem can at times be low, and you will depend on those around you for encouragement and increased self confidence.

However, one caution: you will find that not all friends are "friendly." Your chart suggests that some friends can easily turn into competitors for attention, which is not-so-friendly, and some may even become adversaries and business competitors. Against this eventuality, you should remain aware of this configuration and take note. In other words, despite the fact that you have a strong friendship quotient, there is an indication that not all friends will remain so. Some will turn into competitors at best and enemies at worst. There is this propensity.



Section 10

The Resources Star

Resources are your support system, that is: what you can draw upon and use to become stronger and achieve success. Resources are like the mother that feeds you when you are a child, but also like a mother, they help to shape and inform you, including education of all types. In astrology, this would be what we call the Moon, which refers to emotions, feelings, everything that comes from inside and from the past. Your need for support is what is in question here.

Success and happiness for you very much depends on the support of others, your surroundings, and on your circumstances or environment in general, and it is important for you to have that support available.

To succeed in life, you will do best by seeking out situations and people that will give you support, whether that is a revenue stream, a pat on the back, or both. You do best when someone has your back and stands behind you. Otherwise, you have tendency at times to lack confidence.

You thrive on cooperation from those around you and very much benefit from all the support you can muster. You like to work situations from the inside out, rather from the outside in, from the bottom up, rather than the top down.



When it comes to training and education, this is natural to you. School, academics, studying, and all manner of learning are a path you will do well in. Learn about it from those who know, and then do it.

Section 11

Yin Polarity

A lot of attention is paid in Chinese astrology methods to the balance of the male and female forces, what is called "Yang" or male and "Yin" or female. The yang elements represent unchanging energy and sometimes brute force, while yin elements represent change and adaptability. When we add up the many yin and yang factors of your chart, here is the balance:

Yin Dominates: 11 to 5

Your approach to life in general and to solving problems in particular will from a "Yin" standpoint, which is working with existing problems as they are, manipulating them "as is" rather than trying to alter them or challenging them head-on. To use a martial art analogy, you prefer Aikido to Judo, meaning your skill is working with existing situations passively rather than confronting them actively. The word "passively" here does not mean lying down when problems arise, but rather facilitating and working through the situations instead of making them worse, redirecting energy in motion rather than getting in its way and opposing it.



Section 12

Your Lucky Element

In Four Pillars astrology, balance in the Four Pillars chart equals balance in your life. These are considered identical. One of the main factors that need to be in balance are the distribution of the four elements: Metal, Water, Wood, Fire, and Earth. We can be unbalanced if we are missing an element or have it in small quantity, but we can also be unbalanced by having too much of any one element.

Whichever element we have the least of is termed our "Lucky Element" because whenever it appears in our life it brings our entire chart (and life!) into balance. A year, month, or day that contains our lucky element means a time of balance and thus progress, for in Chinese philosophy only balance brings fulfillment and forward motion.

Your "Lucky Element" is "Wood" and in your chart it is associated with what the Chinese call the "Resources" or Support Factor, because it refers to whatever supports or sustains us, everyone from our mother to the kind of environment we draw around us and draw strength from. Regardless, it is through our resources that we will come across our Lucky Element. As mentioned, this is



also the element in shortest supply and thus most needed. When you encounter this element you achieve inner balance and your life blooms and moves forward. Without it, you can be at a standstill. How easy (or difficult) access to this element will be can depend on whether this is for you a Favorable or Unfavorable element.

The "Lucky Element" in your chart is one of your Favorable Factors, which is a good thing. This makes it quite natural and easy for you accumulate your missing element and therefore bring the needed balance to your chart, which then moves the wheel of success forward in your life.

Section 13

Peach Blossom

Your Peach Blossom is the Bird .In China the blossom of the peach tree is associated with romance and movie-star qualities - charisma. If you have a strong Peach Blossom in your Four Pillars chart, you automatically are a magnet for the opposite sex. Of course everyone wants to know about the status of the Peach Blossom in their chart.

You don't have a Peach Blossom in your standard Four Pillars chart, so instant stardom is probably not on your horizon. However, it is probably worthwhile to keep your eyes open for your particular Peach Blossom, when it occurs in a Luck Cycle or in the year, month, or day columns. This will mark a time during which you can have that star quality.



Section 14

The Relationship Factor

Along with "Wealth," the most in-demand factors are those having to do with relationships, romantic relationships in general, and marriage in particular. While there are several indicators for a successful relationship, one traditional indicator is whether you are favorably or unfavorably inclined to having relationships of any kind.

When it comes to relationships, the lottery of life gave to you the Unfavorable tag, which is usually not as ominous as it sounds. It does not mean you won't get married or won't have relationships, but traditionally it does suggest you may have to exercise care and discrimination in your partners, if you want to avoid bickering or even a train wreck or two. Like most of us, you are going to have to work on relationships if you want them to succeed.

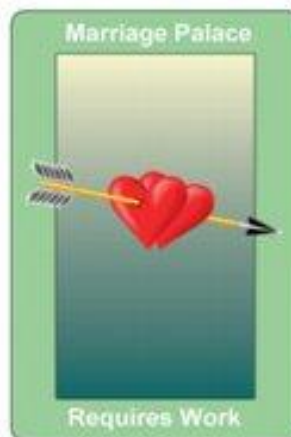


Section 15

Marriage Indicator

Perhaps the main definitive measure of what we might call "marriage-ability" has to do with the Spouse Palace, which is connected to your Day Master. Forgive the jargon, but what it boils down to is whether your Day Master has an auspicious (favorable) factor built into it or not.

In your case, you can expect some bumps and turns along the road to and through marriage as the overall indication is inauspicious and thereby "unfavorable." But don't jump for the divorce clause, and this does not mean you have no chemistry or don't love one another. What tradition states is that despite the chemistry and everything that drives you together, you may have more than your share of obstacles to overcome and work through. The road will not always be smooth.



Section 16

Ten-Year Luck Cycle

Years From 2001 Through 2010

There are two main techniques in Chinese astrology based on the natal chart that describe your current conditions, a long-term analysis and an analysis of the current year. The long-term analysis, given here, covers a period of ten years as shown above. What is important to note is the area or section of your life affected by the current ten-year period.

Your current luck cycle is favorable when it comes to finding the support and resources needed to give you strength and self-confidence. You have increased protection during this time, an environment where you can very much thrive and grow, so take advantage of it. This is a time when you have that extra something that can bring you success.



Current Year Luck for 2009

The Chinese year, which does not start on January 1, like our calendar year, but begins usually in late January or sometime in February brings with it a change to the factors that affect us individually. In particular, each year will accent a basic area of our life, such as Friends, Creativity, Wealth, Influences, and Resources, and this may affect us favorably or unfavorably. It is traditional to pay close attention to the area of life affected for a given year and act accordingly.

This current Chinese year will may affect your productivity and even our creativity, weakening it and causing you to operate to some degree in a diminished capacity. Don't expect too much when it comes to expressing yourself through speech, "The Arts," and so forth. Same with business, its products and progress, which will be slow.



Four Pillars Follow-Up Reports

We hope you enjoyed your Pillars of Destiny Report, and you might also like to check out the following Chinese Pillars of Destiny reports from Astrology.com.

Ten-Year Pillars Luck Report

The Chinese 10-Year Luck Pillars are an essential part of Pillar of Destiny astrology going forward. Life is laid out in ten-year sections starting at birth and extending to over 100 years of age. Your current 10-year segment was very briefly detailed above, but you might like to check-out your complete 100-year luck pillars in our lifetime report, which provides in-depth detail on how each section of life relates to your natal Four Pillars astrology.

Year by Year Pillars Report

Also available is our year-by-year analysis of your Pillars of Destiny astrology. Available ten years at a time, our year-by-year report relates the current year to your natal Four Pillars astrology and details what you can expect each year. In addition, you get month-by-month comments, which makes planning events easy.

